

# HUNTERDON PARKS HARBINGER

WINTER 2023-2024



## HUNTERDON COUNTY DIVISION OF PARKS & RECREATION

Mailing Address: P.O. Box 2900, Flemington, NJ 08822-2900

Office Location: 1020 State Highway 31, Lebanon, NJ

Telephone (908) 782-1158 · Fax (908) 806-4057

Email: [parks@co.hunterdon.nj.us](mailto:parks@co.hunterdon.nj.us) · <https://co.hunterdon.nj.us/depts/parks/parks.htm>



# MAPLE SUGARING

## SWEET FUN FOR THE WHOLE FAMILY

Echo Hill Park - 42 Lilac Drive, Flemington, NJ 08822

Native Americans discovered the sweet quality of sugar maple sap before written history. For hundreds, maybe even thousands of years, Native Americans would set up camp in a stand of sugar maples during the sap run. The sugar they produced was an important food for them and for the colonists, who learned the process from the Native Americans. It was only during the 1930s when maple sugar took the form we use today: syrup!

### MAPLE TREE TAPPING

Sunday, January 28, 1:00P-3:00P

Ages: 6 through Adult

All children must be accompanied by an adult.

Cost: \$8/family

Instructor: Debra Reed and Patrick Eckard

Have you wondered how we tap the trees to collect maple sap? We will take a short walk to the Echo Hill Park Sugar Bush where you will learn how to identify a sugar maple and learn how to tap a maple tree.



### MAPLE SAP COLLECTION

(A) Sunday, February 4, 1:00P-2:30P

(B) Sunday, February 18, 1:00P-2:30P

Ages: 5 through Adult

All children must be accompanied by an adult.

Cost: \$8/family

Instructor: Debra Reed and Patrick Eckard

Collecting the sap is a crucial step of the maple sugaring process! Let's visit the Sugar Bush to see sap collection in action. Get hands-on experience with sap buckets and learn about modern sap collection systems.

### MAPLE SUGARING LIVING HISTORY OPEN HOUSE

Saturday, March 9, 9:00A-3:30P

**FREE-No pre-registration required**

All Ages

All children must be accompanied by an adult.

Experience first-hand the North American tradition of maple sugaring at Hunterdon County's Maple Sugaring Program. You'll take a trip through time to experience the art of the sugaring process. Along the way you will see an early American Frontiersman tapping his trees, visit a sugar "farmer" at his evaporator, and enjoy a Native American story about the discovery of maple sap.

Sessions start every 30 minutes beginning at 9:00 AM. The last session starts at 2:30 PM.



### School Field Trips and Private Groups

Maple Sap Collection | February 5 - March 1

Maple Sugaring Living History | February 26 - March 22

\$40 per session

Call us to schedule your group today!



# RECREATION TRIPS

## COACH BUS TRIPS

### NEW YORK CITY BUS TRIP

Sunday, December 10, 8:30A-8:00P

Location: Departs from Deer Path Park

NYC Drop off point: Bryant Park

All Ages

All children must be accompanied by an adult

Cost: \$45

Experience the holiday season in historic Manhattan, where the aromas of hot chocolate and pine waft through the air! The private coach bus departs from Deer Path Park at 8:30 AM and will head straight to Bryant Park, near Times Square and other attractions. You can spend your day at the world-famous Rockefeller Center ice rink, on a carriage ride through Central Park, shop at the historic New York City Macy's, or even go to a Broadway show— the options are endless. The bus will be leaving NYC at 6:00 PM, so be sure to plan your day appropriately.



### PHILADELPHIA FLOWER SHOW BUS TRIP

Tuesday, March 5, 9:45A-7:00P

Parking Location: Deer Path Park

Ages: Adults 18+ years

Cost: \$85 includes Flower Show ticket

Sit back & relax as we take you by coach bus to the world's oldest and largest indoor flower show! The show features large-scale gardens, elaborate landscapes, and over-the-top floral creations. Visitors are treated to fabulous design, live entertainment, gardening how-to workshops, and lectures by experts. You can shop for plants and gifts, sample wines, and attend different seminars. For lunch, consider visiting the Reading Terminal Market across the street (on your own).

## PARK VAN TRIPS

### MARTIN GUITAR AND MACK TRUCK MUSEUMS

Friday, February 16, 8:30A-5:00P

Parking Location: Deer Path Park

Ages: Adults 18+

Cost: \$32

Travel in a 15-passenger van to tour both the Martin Guitar Shop & Museum and the Mack Truck Museum. At Martin Guitar, see more than 200 rare, vintage instruments, honoring the artists who created music history, from Gene Autry and Johnny Cash to Elvis and John Mayer, witness firsthand the detail of exquisite craftsmanship that goes into each guitar. The use of provided headphones will be required during the factory tour in order to hear your tour guide. At the Mack Truck Museum, see a large indoor collection of vintage Mack trucks, learn about the history of company and how they helped shape the work. The group will stop for lunch at a local eatery. Bring money for lunch and \$10 for tour donations.

## ONLINE PROGRAM REGISTRATION

You can register for any of our Hunterdon County Parks and Recreation programs online. Visit our website [co.hunterdon.nj.us/479/Parks-Recreation](http://co.hunterdon.nj.us/479/Parks-Recreation) and click the photo for Online Program Registration.

Register in person by completing the program registration and medical record form on pages 15-16 of this Harbinger. Visit the Hunterdon County Arboretum at 1020 Rt 31, Lebanon, NJ 08833 Mon-Fri 8:00A-4:30P or mail your completed form with check payment to Hunterdon County Parks and Recreation, P.O. Box 2900, Flemington, NJ 08822.

### CANCELLATION POLICIES:

You will be notified by phone if we cancel a program and you will receive a full refund. Programs are designed for all types of weather and participants should dress appropriately. Cancellations by participants must be in writing, and cancellations made less than one week prior to program will NOT receive a refund.

# NATURE PROGRAMS

## YOUTH NATURE SERIES



### NATURE CLUB

Eight Tuesdays, January 9 to March 5  
(No class February 13)

Times:

PreK AM: 9:30A-10:45A

PreK PM: 1:00P-2:15P

School Age: 4:00P-5:15P

Location: North Branch of the Hunterdon  
County Library

Cost: \$90 per child for all 8 lessons

Ages: PreK 3-5 years, School Age 4-8 years

All children must be accompanied by an adult

Instructor: Debra Reed, Park Naturalist

Learn, create, play games, and explore! Our popular nature clubs will introduce your child to many exciting nature topics. We will guide the children during outdoor walks, exploring areas similar to your own backyard. Other fun hands-on activities include science experiments, games, and craft projects. The children will be able to observe the surprising changes in nature from week to week as we progress through the season. Through our explorations, children will also improve their attention to detail as we observe the colors, shapes, textures, and sounds of the natural world.

Please be sure to dress your child for the outdoors so they will be able to enjoy these activities. We strongly recommend old clothes and sneakers/boots that can get dirty.

### TOT WALKS

Location: Echo Hill Park

Ages: 2-3

All children must be accompanied by an adult

Cost: \$10/session

Instructor: Laura Bush, Principal Park Naturalist

Discover nature at your local park! Leave the strollers behind as we read a story and take a walk to learn about the nature around us and do a craft on each theme.

### WINTER TREES

(A) Wednesday, December 13, 9:30A-10:30A

(B) Thursday, December 14, 9:30A-10:30A

### WEATHER

(A) Wednesday, January 10, 9:30A-10:30A

(B) Thursday, January 11, 9:30A-10:30A

### GROUNDHOGS

(A) Wednesday, February 7, 9:30A-10:30A

(B) Thursday, February 8, 9:30A-10:30A



Studies have shown that exposure to nature and outdoor environments can have a positive impact on a child's cognitive development and overall well-being. Children who spend more time in natural settings tend to have better concentration, improved problem-solving skills, and reduced stress levels.



# YOUTH NATURE SERIES CONTINUED

## HOMESCHOOL NATURE PROGRAMS

Ages: 7-17

All children must be accompanied by an adult  
Cost: \$8/session  
Instructor: Tom Sheppard, Chief Park Naturalist

Join our Homeschool Nature Program for a monthly dose of outdoor education and exploration! In each session, your child will immerse themselves in a new and exciting nature topic, fostering curiosity and a deeper connection to the natural world. Ignite their love for learning with our engaging, hands-on experiences, perfect for homeschoolers seeking dynamic and educational adventures.

### ANIMAL EVIDENCE HIKE

Wednesday, December 6, 1:00P-2:30P  
Location: Cushetunk Mountain Preserve

We will take a walk at Cushetunk Mountain Preserve, situated on the northern slope of Round Valley Reservoir and be on the lookout for the evidence that our wild fauna is around. With some luck we will hopefully see some of them. We will be walking for most of the program, the trail is rocky and has some slope to it. Please dress for the conditions.

### SCREECH OWL EXPLORATION

Friday, February 2, 9:00P-10:00P  
Location: South Branch Reservation-Sunnyside

This program will teach you the etiquette for owling, with a focus on the screech owl. During the program we will take a walk into the park's interior and we will attempt to call to the Eastern Screech Owls for a response. Depending on the assumed distance, we will try to draw one in for viewing, but no guarantees. The group is not permitted to bring flashlights or headlamps. The trail at Sunnyside is wide and flat and we will provide red lights for the limited walking that will be done.



### SEARCH FOR THE WOOD FROGS

Wednesday, February 14, 1:00P-2:30P  
Location: Sourland Mountain Preserve

February is the start of the amphibian calling season. The Wood Frog is one of the first to call. We will take a walk into the heart of the Sourland Mountain Preserve in the hopes of hearing and possibly even finding some of them calling. During the walk, we will talk about amphibian and their habitat needs and why Sourland is a prime location to find them. Please dress for the conditions.

### BABY WALKS

Time: 10:00A-11:00A  
Ages: 0-23 months with adult  
Cost: Free  
Instructor: Laura Bush, Principal Park Naturalist

Get outside with your baby and explore your local trails! We will do some nature education geared toward the adults, and enjoy the company of other parents and caregivers in the area. We will walk at the pace of the adults; we ask that babies be carried or in a stroller.



**Friday, December 15:** Columbia Trail, Hunterdon/Morris County Border, 362 West Valley Brook Road, Lebanon Township, Fine gravel trail appropriate for strollers and carriers

**Friday, January 12:** Landsdown Trail, 11 West Main Street, Clinton, Park by Fox Lumber, Fine gravel trail appropriate for strollers and carriers

**Friday, February 16:** Hoffman Park satellite entrance, 751 Mechlin's Corner Road, Union Township, Coarse gravel trail appropriate for carriers and robust strollers only

# NATURE PROGRAMS

## FAMILY NATURE EVENTS

### OWLS OF HUNTERDON

Thursday, December 14, 7:00P-8:00P

Location: Echo Hill Park

Ages: 8 through Adult

All children must be accompanied by an adult

Cost: \$8/person

Instructor: Tom Sheppard, Chief Park Naturalist

Great Horned Owls are already beginning to think about their breeding season. This is the time that we can start hearing the owls calling at night. We will introduce you to the owls that can be found in Hunterdon County and the state. Along with facts about each of the owls, you will hear the calls of each species and learn the fundamentals of how to find the species.



### REPTILES ALIVE

Sunday, January 7, 1:00P-2:00P

Location: Echo Hill Park Main Lodge

Ages: All ages

All children must be accompanied by an adult

Cost: \$8/person

Instructor: Debra Reed, Park Naturalist

Live animals are fun and educational for everyone! Join us for an interesting and interactive afternoon as we learn about these scaly critters. Many snakes and turtles live here in Hunterdon. Find out if snakes are slimy and how fast a turtle moves. Discover what reptiles need our protection and which reptiles should be observed at a distance. This program is an exciting experience for the entire family.



### CONSTELLATIONS, THEIR MYTHS, & THE KING

Friday, January 12, 7:00P-8:30P

Location: Hoffman Park -Baptist Church Road Lot

Ages: 10 through Adult

All children must be accompanied by an adult

Cost: \$8/person

Before the computer, TVs, and even books, all civilizations had was the sky above them. Join us for an evening as we gaze at the stars and share the season's constellations and the myths/stories that went along with them. We will also take time and look at the King of the Gods, Jupiter.



### WINTER WILDERNESS SURVIVAL SKILLS

Sunday, January 14, 1:00P-3:00P

Location: Echo Hill

Ages: 8 through Adult

All children must be accompanied by an adult

Cost: \$8/person

Instructor: Debra Reed, Park Naturalist

Do you know what to do if something doesn't go according to plan on your cold outdoor adventures? Join us to learn the essentials of preparing for the outdoors, how to build a basic shelter, fire, and some basic first aid skills.

# FAMILY NATURE EVENTS CONTINUED

## WINTER TRACKING

Saturday, January 27, 9:30A-10:30A

Location: Teetertown Preserve

Ages: All Ages

All children must be accompanied by an adult

Cost: \$8/person

Instructor: Laura Bush, Principal Park Naturalist



A recent snowfall is the best time to look for animal tracks. Although much of our wildlife is nocturnal, we can learn what animals live near us by the clues they leave behind. Let's take a tracking hike around Teetertown Preserve. Please dress for the weather. If there is no snow, we will look for tracks in the mud, as well as other signs of wildlife.

## EVENING WALK FOR SCREECH OWLS

Friday, February 9, 9:00P-10:00P

Location: Sunnyside Section of the South Branch

Ages: 12 through Adult

All children must be accompanied by an adult

Cost: \$8/person

Instructor: Tom Sheppard, Chief Park Naturalist

February is the time for owls. This nighttime walk will focus on etiquette one must use when owling. During this walk, we will attempt to call to the Eastern Screech Owls for a response. Depending on the assumed distance, we will try to draw one in for viewing, but no guarantees. The group is not permitted to bring flashlights or headlamps. The trail at Sunnyside is wide and flat and we will provide red lights for the limited walking that will be done for the program.

## LOVE IN NATURE

Tuesday, February 13, 7:00P-8:00P

Location: Echo Hill Park Main Lodge

Ages: 10 through Adult

All children must be accompanied by an adult

Cost: \$8/person

Instructor: Laura Bush, Principal Park Naturalist

The male house wren constructs "dummy nests" of a few sticks in several different locations, and brings the female around on a "house-hunting" tour before she decides on the perfect spot for her nest. Male nursery web spiders present a parcel of food wrapped in silk as a gift for their chosen female. Male bowerbirds build a "bower" of sticks and decorate it with blue objects, and then dance for the females. In honor of Valentine's Day, enjoy a slide show of various courtship rituals in nature around the world.

## WINTER TREE ID

Wednesday, February 21, 9:30A-11:00A

Location: Sourland Mountain Preserve

Ages: 8 through Adult

All children must be accompanied by an adult

Cost: \$8/person

Instructor: Laura Bush, Principal Park Naturalist



Have you ever wondered how to identify trees after all the leaves have fallen? Don't wait until summer! Learn how to identify trees by looking at their bark, buds, and shape. This trail is rocky and can sometimes be wet.

## GREAT BACKYARD BIRD COUNT

Saturday, February 17, 9:30A-11:00A

Location: Point Mountain Central River Trail

Ages: 8 through Adult. All children must be accompanied by an adult

Cost: \$8

Instructor: Laura Bush, Principal Park Naturalist



Jointly sponsored by the Cornell Lab of Ornithology and the National Audubon Society, the Great Backyard Bird Count (GBBC) is an annual event that engages bird watchers to create a real-time snapshot of where birds are across the continent. Take a bird walk to go over some bird identification tips and record what species are out there and how many of each. This data will be submitted to the GBBC to aid in citizen science research. For bird watchers of any ability. Please note: there are no restroom facilities available at this location.



# NATURE PROGRAMS

## WEBINARS

Hunterdon County Parks and Recreation's nature webinars offer a captivating window into the region's diverse and stunning natural landscapes. These webinars provide a unique opportunity to deepen your understanding of local flora and fauna, ecological conservation, and sustainable practices. Best of all, they are completely free, making them accessible to all nature enthusiasts, from beginners to experts, eager to explore and protect the beauty of Hunterdon County.

### BLACK BEARS

Monday, December 4, 7:00P-8:00P

Ages: 10 through Adult

Instructor: Debra Reed, Park Naturalist



The black bear population in New Jersey has been increasing every year for the past four decades. With this population increase human encounters do happen on occasion. Want to know what to do to prevent an encounter and how to take measures to help protect these wild animals here in the county? Join us virtually to learn more about these amazing mammals and how you can help keep you and these animals from harm.

### OWLS OF HUNTERDON

Wednesday, January 17, 7:00P-8:00P

Ages: 8 through Adult

Instructor: Tom Sheppard, Chief Park Naturalist



For those that were not able to attend the live presentation, you can attend online. Great Horned Owls are already beginning to think about their breeding season. This is the time that we can start hearing the owls calling at night. Get introduced to the owls that can be found in Hunterdon County and the state. Learn facts about each of the owls and the fundamentals of how to find the species.

### COEXISTING WITH COYOTES

Sunday, January 21, 7:00P-8:00P

Ages: 9 through Adult

Instructor: Debra Reed, Park Naturalist



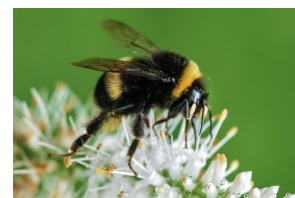
Coyotes are part of our county's wildlife population. Their numbers are growing, and can be seen or heard almost everywhere in the area. Join us as we discuss the comeback of the Eastern Coyote and the issues, concerns, and benefits that surround this species. Learn how you can adapt to coexist with coyotes.

### BEE KIND OR BEE STUNG

Wednesday, February 21, 7:00P-8:00P

Ages: 8 through Adult

Instructor: Tom Sheppard, Chief Park Naturalist



Many people know the value of the Honeybee, but do you know how to tell it from a Bumblebee or a Carpenter Bee? Many of us are aware of the Yellowjacket. But what makes it different from the Paper Wasp or the Hornets? Join us for this program as we try to explain the difference between these insects and the value they all have.

Registration for all of our webinars can be found on our website at [www.https://www.co.hunterdon.nj.us/2715/Nature-Webinars](http://www.https://www.co.hunterdon.nj.us/2715/Nature-Webinars)





# ADULT NATURE EVENTS

## BIRD WALK FOR THE NEW YEAR

Wednesday, January 3, 8:00A-10:30A  
Location: Hoffman Park-Baptist Church Road Lot  
Age: Adult  
Cost: \$12/person  
Instructor: Tom Sheppard, Chief Park Naturalist

The new year has started. Join us for a bird walk around Hoffman Park. For those of you that keep a year-list of birds, this will be a great way to get a jump on your new list. We will search the open areas and edge habitat and take a walk through the woods looking for any winter visitors and the normal residents.

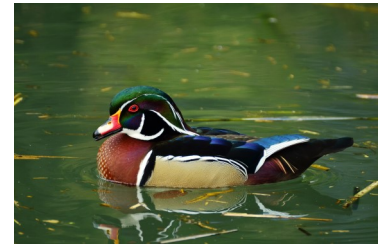


## WOOD DUCK EXPLORATION

Sunday, March 3  
1:00P-2:15P  
Location: South Branch Reservation-  
Wings Section

Ages: Adult  
Cost: Free  
Instructor: Debra Reed, Park Naturalist

Wood ducks arrive in Hunterdon at the beginning of March to raise their young. Join us to learn about these ducks, and other waterfowl that frequent the area. While walking along the river we will examine and prepare their nesting boxes for the soon-approaching mating season. Perhaps, if we are lucky, we will spot an early migrant to the area.



Your group can reserve a private session for our holiday nature crafts.

Contact us today to schedule your group. Space for our seasonal programs fills up quickly.

# NATURE CRAFTS

## EVERGREEN WALK & CRAFT

Wreath: Friday, December 8, 1:00P-2:30P  
Swag: Saturday, December 9, 1:00P-2:30P  
Location: Arboretum Gardens  
Ages: 5 through Adult  
All children must be accompanied by an adult  
Cost: \$15/project  
Instructor: Laura Bush, Principal Park Naturalist

Warm up with a winter nature walk around the Arboretum! Do you know the difference between pines, spruces, and hemlocks? Can you find different shades of green? What's the difference between a conifer and an evergreen? Let's find out the answers to these questions while exploring your local park. Bring your own clippers and a tote bag to collect some greens during the walk. We will then assemble a wreath or swag to use in holiday decorating. Families may work together on one project or pay per person to each create their own. Please note: this is a fully outdoor program, so dress for the weather.



## NATURE CREATED CANDLES

Sunday, December 17, 2:00P-3:15P  
Location: Echo Hill Park Main Lodge  
Ages: 4 through Adult  
All children must be accompanied by an adult  
Cost: \$8/person  
Instructor: Debra Reed, Park Naturalist

Take a winter walk through our park to discover the sights and smells of the season. We will gather these crisp natural aromas and preserve them in homemade candles. They will make a great gift for the season. We will discover how many different evergreens grow here. Conifers are an ancient and diverse group of trees, but are all conifers evergreen? Are all cones, pinecones? Join us to create and learn more about these amazing trees that decorate so many homes at this time of year.



# Walks and Hikes

## FAMILY WALKS



### SECOND DAY HIKE

Tuesday, January 2, 1:00P-3:30P

Location: Musconetcong Mountain Preserve

Ages: 10 through Adult

All Children must be accompanied by an adult

Cost: \$12/person

Instructor: Laura Bush, Principal Park Naturalist

Welcome the new year with some fresh air and exercise! Musconetcong Mountain is a lollipop trail downhill on the way out and uphill on the way back. It traverses woods, passes the ruins of a farmstead, and finishes up at a stream. Expect to hike about 2.5 miles.

### FULL MOON WALK

Saturday, February 24, 5:00P-6:30P

Location: Arboretum

Ages: 5 through Adult

All children must be accompanied by an adult

Cost: \$8/person

Instructor: Debra Reed, Park Naturalist

The hush of a winter night, one of the most stunning times of the year. Come out and watch the sunset while going for a walk in the park. Take some time to reflect, while encompassed in the beautiful tranquility that surrounds you in winter. Find out what is happening in nature during this transition from daylight to darkness.

### WALKS FOR FUN

Tuesdays, 2:30P-4:30P

Ages: 12 through Adult

All children must be accompanied by an adult

Cost: Free

Instructor: Liz Braidwood-Fulmer, Recreation Program Coordinator

Discover the joy of walking together. Our program not only makes staying active easy, but it also creates lasting connections with like-minded individuals, ensuring that every step you take is not only beneficial for your health but also a memorable and enjoyable experience.

December 26: Echo Hill Park

January 30: Landsdown Trail-Clinton

February 27: South Branch Reservation-Stanton Station

## STORYWALK® at the Hunterdon County Arboretum

This is an invitation to experience our StoryWalk®. Enjoy nature and get some fresh air while reading the storybook, Jan Brett's *The Hat*. StoryWalk® is a fun journey reading the pages of our favorite books while walking along the Wizard Trail in the Gardens at the Hunterdon County Arboretum. The StoryWalk® is open, for your enjoyment, from dawn to dusk.

Our StoryWalk® was created by a partnership between Hunterdon County Parks & Recreation and the Hunterdon County Library. Funding provided by the Friends of the Hunterdon County Library and Hunterdon County Parks & Recreation.

StoryWalk® is a registered service mark owned by Anne Ferguson.





# ADULT WALKS AND HIKES

## SENIOR STROLLS

Wednesdays, 9:30 AM to 11:00 AM

Ages: Adult

Cost: Free

Instructor: Liz Braidwood-Fulmer, Recreation Program Coordinator

Join our Senior Strolls, specially designed for those aged 55 and above, and experience the sheer delight of walking together. Our walks not only promote a healthier and more active lifestyle but also offer the chance to form meaningful connections with peers, making each walk an enjoyable and socially enriching experience.

**December 6: Hunterdon County Arboretum**

**January 24: Hoffman Park**

**February 7: South Branch Reservation-  
Riverfield Section**

## WINTER HIKING WEEK

Monday-Friday, January 29 to February 2

9:30A-11:30A

Ages: 15 through Adult

All children must be accompanied by an adult  
Cost: \$40/person

Instructor: Laura Bush, Principal Park Naturalist

Each day, we will meet at a different park and do a moderate to strenuous hike. We will enjoy some exercise, build relationships, and learn about local flora and fauna. Dress for the weather as we plan to be outside even in light rain. If heavy rain or thunderstorms are forecasted, we will meet at Echo Hill and do an indoor program on hiking or wildlife.

**Monday, January 29:**

**Tower Hill Reserve**

**Tuesday, January 30:**

**Sourland Mountain Preserve**

**Wednesday, January 31:**

**Deer Path Park Round Mountain**

**Thursday, February 1:**

**Hoffman Park**

**Friday, February 2:**

**Cushetunk Mountain Preserve**

## ADULT RECREATION WALKS

Wednesdays

Ages: Adult

Cost: Free

Instructor: Patrick Eckard, Recreation Program Coordinator

Indulge in the tranquility of local parks and uncover their natural beauty on our walks. As you meander through these serene landscapes, our knowledgeable staff will sprinkle in fascinating tidbits of historical insight, enhancing your appreciation for both the environment and the past. Each location has varying degrees of intensity; select your walks based on your ability level.

**December 13, 9:30A-11:00A:**

**Charlestown Reserve**

2.5-mile trail hike, Moderate difficulty and grade

**January 10, 9:00A-11:00A:**

**Pine Hill**

Meet at Echo Hill Park

Short but moderate difficulty hike. Due to limited parking onsite, meet at Echo Hill Park and transportation will be provided.

**February 14, 9:00A-11:00A:**

**South Branch Reservation-Wings Section**

Meet at Echo Hill Park

Shorter easy to moderate walk. Due to limited parking onsite, meet at Echo Hill Park and transportation will be provided.



**Did you know that there are more than 140 miles of trails in the Hunterdon County Park System?**

**Our trails are open year-round.**

# BASKETRY AND CRAFTS

## BASKETRY

Basketry, with its deep historical roots in cultures worldwide, offers an enriching and timeless experience for individuals of all backgrounds. Through hands-on learning, participants can appreciate the therapeutic and creative aspects of basketry, connecting with tradition while fostering a sense of accomplishment and personal fulfillment.

### WOVEN BALL HOLIDAY BULB

Friday, December 8, 6:00P-9:00P

Location: Echo Hill Park Multipurpose Room

Ages: 14 through Adult

All children must be accompanied by an adult

Cost: \$16/person

Instructor: Liz Braidwood-Fulmer, Recreation Program Coordinator

Skill Level: beginner to advanced, some basketmaking experience helpful.

Create a holiday bulb by weaving over a small ball using thin round reed and raffia. You can make a second bulb if time allows. Natural and holiday colored reed will be available to spark your creativity. Participants will go home with enough materials to make another bulb.



### TOTE BASKET

Saturday, January 20, 9:00 A-3:30P

Location: Echo Hill Park Multipurpose Room

Ages: 12 through Adult

Minors must be accompanied by an adult

Cost: \$40/person

Instructor: Liz Braidwood-Fulmer, Recreation Program Coordinator

Skill Level: beginner to advanced

Weave a tote that will measure approximately 12" long x 6" wide x 8" tall made from flat rattan reed. The shaker tape cloth shoulder strap makes it comfortable to tote around your paperwork.



### 3 THREE ROD WALES

Friday, January 5, 9:00 A-3:30P

Location: Echo Hill Park Multipurpose Room

Ages: Adult

Cost: \$35/person

Instructor: Liz Braidwood-Fulmer, Recreation Program Coordinator

Skill Level: intermediate to advanced.

The base of this basket is a six-sided star created using 1/4" flat reed that becomes the spokes. The sides are woven with three sets of three rod wale that chase each other.



### WALTER'S WALL BASKET

Thursday, February 1, 9:00A-3:30P

Location: Echo Hill Park Multipurpose Room

Ages: Adult

Cost: \$30/person

Instructor: Liz Braidwood-Fulmer, Recreation Program Coordinator

Skill Level: beginner to advanced

Craft a multimedia cylindrical basket. Using random weave to create a meandering pattern.



SCAN HERE TO REGISTER ONLINE



# MAKE-IT-TAKE-IT CRAFT PROGRAMS

Making crafts offers creative outlets for both children and adults, promoting self-expression, problem-solving, and stress relief. It provides a sense of achievement and the chance to bond with others through collaborative projects. Whether for artistic exploration or relaxation, crafting offers a fulfilling and engaging experience.

Mondays, 6:00P-8:00P

Location: Echo Hill Park Multipurpose Room

Ages: 5 through Adults

All children must be accompanied by an adult

Cost: \$12/project

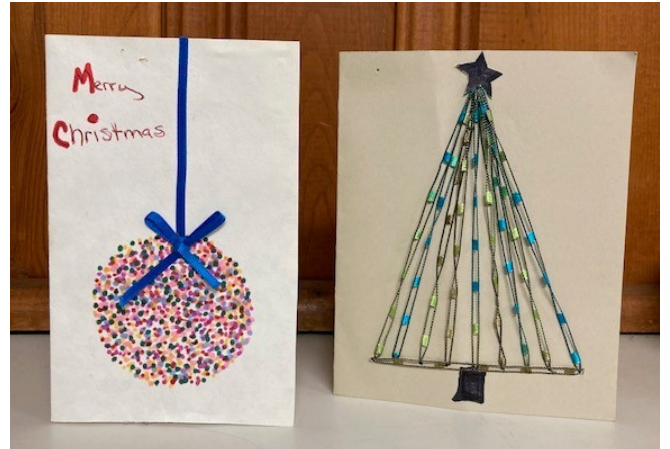
Instructor: Liz Braidwood-Fulmer, Recreation Program Coordinator

Participants will receive step-by-step instructions as they create the crafts. Individual adults will work on their own project, while, adult/child teams will work together to make a single project.

**December 18: Handmade Cards:** Let's make meaningful homemade cards. In this workshop we will craft a holiday card, a thank-you card, and a birthday card.

**January 8: Weave A Fish:** Make a fish decoration by weaving rattan basket material.

**February 5: Swedish Star:** Make a Swedish Star decoration by weaving rattan basket material.



## Group Requested Programs

Your youth or adult group can request a variety of nature, craft, or skill-based programs to be brought to you at a public meeting location or held on-site in a county park. We can cover topics from baskets to CPR, amphibians to wildflowers. Our staff can provide your group with an informative fun event. For more information about what programs we offer, or to request more information about scheduling a program visit our website:



[www.co.hunterdon.nj.us/506/Group-Education-Programs](http://www.co.hunterdon.nj.us/506/Group-Education-Programs)

# HUNTERDON COUNTY DIVISION OF PARKS & RECREATION

## OFFICE HOURS

Monday to Friday, 8:00 AM to 4:30 PM  
Location: 1020 Route 31, Lebanon, NJ 08833

PHONE: (908) 782-1158

WEBSITE: [www.co.hunterdon.nj.us/479/Parks-Recreation](http://www.co.hunterdon.nj.us/479/Parks-Recreation)

Like "Hunterdon County Parks" on Facebook.

## MISSION STATEMENT

The Hunterdon County Division of Parks and Recreation is dedicated to preserving open space and natural resources, providing safe parks and facilities, and offering educational and recreational opportunities, all contributing to an enhanced quality of life for present and future generations.

## MODIFICATION STATEMENT

The Hunterdon County Division of Parks and Recreation welcomes all individuals to participate and enjoy our parks, facilities, and recreational programs. Reasonable modifications, individual adaptations, and support will be provided for persons of all abilities, to encourage everyone to benefit equally from their choice of leisure activities.

Individuals requesting modifications shall describe what they need to use the service. Whenever feasible, please make the request in advance, before the modification is needed to access the service. Each request will be assessed individually.

## RESERVABLE FACILITIES:

**ARBORETUM:** Two Gazebos

**DEER PATH PARK:** Two Pavilions, Gazebo, & Softball Field

**COURT STREET PARK:** Gazebo/Bandstand

**ECHO HILL PARK:** Main Lodge & Group Campsite

**TEETERTOWN PRESERVE:** Group & Public Campsites

To reserve a facility, contact the park office.

For information on each park, visit our website.



SCAN HERE TO  
LEARN MORE  
ABOUT OUR  
FACILITIES

## VISITOR SERVICES STAFF



Back row, left to right:

Laura Bush: [lkroon@co.hunterdon.nj.us](mailto:lkroon@co.hunterdon.nj.us)

Liz Fulmer: [lfulmer@co.hunterdon.nj.us](mailto:lfulmer@co.hunterdon.nj.us)

Debra Reed: [dreed@co.hunterdon.nj.us](mailto:dreed@co.hunterdon.nj.us)

Front row, left to right

Tom Sheppard: [tshppard@co.hunterdon.nj.us](mailto:tshppard@co.hunterdon.nj.us)

Patrick Eckard: [peckard@co.hunterdon.nj.us](mailto:peckard@co.hunterdon.nj.us)

## AFFILIATED ORGANIZATIONS

ARC OF HUNTERDON COUNTY [archunterdon.org](http://archunterdon.org)

HUNTERDON FLUTTERWHEELS SQUARE DANCE CLUB [hunterdonflutterwheels.nnjstda.org](http://hunterdonflutterwheels.nnjstda.org)

HUNTERDON HIKING CLUB  
[hunterdonhikingclub.org](http://hunterdonhikingclub.org)

NJ BEEKEEPERS ASSOCIATION [nwnjba.com](http://nwnjba.com)



Heron Glen has quickly positioned itself as one of New Jersey's finest public golf facilities. From junior camps to leagues, we offer programs for every golfer out there. For your family outing or an afternoon spent with friends, we invite you to see why so many refer to Heron Glen as the course they call home. Our facility offers a beautiful 18-hole golf course, pro shop, driving range, and putting green. For more information, please visit our website at [www.heronglen.com](http://www.heronglen.com) or call at (908) 806-6804. 110 US Highway 202 / Route 31, Ringoes, NJ 08551



# HUNTERDON COUNTY DIVISION OF PARKS & RECREATION

DEPARTMENT OF ADMINISTRATIVE SERVICES

Mailing Address: PO Box 2900, Flemington, NJ 08822-2900

Office Location: 1020 State Highway 31, Lebanon, NJ

Telephone (908) 782-1158 Fax (908) 806-4057

E-mail: [parks@co.hunterdon.nj.us](mailto:parks@co.hunterdon.nj.us) Website: [www.co.hunterdon.nj.us/depts/parks/parks.htm](http://www.co.hunterdon.nj.us/depts/parks/parks.htm)



**THIS FORM MUST BE RETURNED WITH THE MEDICAL RECORD.**

*Once the medical record is on file, we can use the same medical record for all subsequent programs. If your medical history has changed, please submit a new medical record.*

PARTICIPANT'S NAME \_\_\_\_\_ RECEIPT # \_\_\_\_\_

TODAY'S DATE \_\_\_\_\_ DATE OF BIRTH \_\_\_\_\_ GENDER (optional) \_\_\_\_\_

PARENT/GUARDIAN NAME (if minor) \_\_\_\_\_

PHONE (h) \_\_\_\_\_ (w) \_\_\_\_\_ (c) \_\_\_\_\_

ADDRESS \_\_\_\_\_  
street town state zip

EMAIL ADDRESS \_\_\_\_\_  check here to be added to our email list

PROGRAM	DATE	LOCATION	TIME	FEE

**FEE ENCLOSED:** \$ \_\_\_\_\_. Make check payable to "Hunterdon County Parks." Fees are listed in the *Hunterdon Parks Harbinger* and on the website and are used to offset the cost of the program.

**IMPORTANT POLICIES:** (Participant or parent/guardian, please read and provide authorized signature.)

- 1. Cancellation requests must be in writing. NO REFUNDS WILL BE ISSUED FOR CANCELLATIONS MADE LESS THAN ONE WEEK PRIOR TO THE PROGRAM.**
2. Payment is due in advance of the program with this registration form & the medical record. Please mail it to the PO Box listed above or drop it off at the office location. Cash or check accepted.
- 3. I have read and understand these policies and consent to myself or my child participating in the above referenced program(s).**

Date: \_\_\_\_\_

\_\_\_\_\_  
(Signature of Participant or Parent/Guardian for minor)

*(Revised 11-2022)*

**ACCESSIBILITY STATEMENT:** It is the policy of the County of Hunterdon to provide reasonable modifications to persons with disabilities. Individuals requesting modifications shall describe what they need to use the service. Whenever feasible, please make the request in advance, before the modification is needed to access the service.



HUNTERDON COUNTY DIVISION OF PARKS & RECREATION



MEDICAL RECORD

Once the medical record is on file, we can use the same medical record for all subsequent programs. If your medical history has changed, please submit a new medical record.

Participant's Name \_\_\_\_\_ Gender (optional) \_\_\_\_\_

Today's Date \_\_\_\_\_ Participant's Date of Birth \_\_\_\_\_

Parent/Guardian (for minor) \_\_\_\_\_

Phone (h) \_\_\_\_\_ (w) \_\_\_\_\_ (c) \_\_\_\_\_

Address \_\_\_\_\_

Street

Town

State

Zip

E-mail \_\_\_\_\_  Check here to be added to our E-mail List.

EMERGENCY CONTACT(S) – AT LEAST ONE CONTACT WHO IS NOT A PARENT/GUARDIAN

Name \_\_\_\_\_ Relationship \_\_\_\_\_ Phone \_\_\_\_\_

Name \_\_\_\_\_ Relationship \_\_\_\_\_ Phone \_\_\_\_\_

Physician(s) Name and Number \_\_\_\_\_

List all known allergies \_\_\_\_\_

Describe allergic reaction(s) and how it is managed \_\_\_\_\_

Medical issues \_\_\_\_\_

Current medications \_\_\_\_\_

(Parks staff do not administer non-emergency medication)

Health Insurance Provider \_\_\_\_\_ Policy number \_\_\_\_\_

Please describe any other relevant conditions or information that we should know \_\_\_\_\_

Terms of Agreement: Please initial next to all statements.

Waiver: I hereby waive and release all rights and claims for damages against the Hunterdon County Division of Parks and Recreation, County of Hunterdon, their employees and volunteers for all injuries or illness which may be sustained by the herein named participant while participating in the program. I understand the content of the program and the risks of personal injury therein. \_\_\_\_\_

Medical Release: In the event of injury or serious illness, and a parent/guardian cannot be reached (and/or if there is a medical emergency requiring immediate action), I give permission for Hunterdon County Division of Parks & Recreation staff to seek medical attention and to release all information contained in this document or known to Parks staff. \_\_\_\_\_

Photo Release: I authorize and acknowledge that I or my child may be photographed and/or videotaped for educational and publicity purposes (Website, Facebook, Instagram, Brochures, etc). Photos and videos will not include names or personal information about any individual unless permission is granted. \_\_\_\_\_

Participant or Parent/Guardian Signature: \_\_\_\_\_ Date: \_\_\_\_\_